

COVID-19 UPDATE

North Dakota Medicaid

April 24, 2020

CORONAVIRUS AID, RELIEF, AND ECONOMIC SECURITY ACT (CARES ACT)

Signed into law March 27, 2020

Some Provisions Affecting Medicaid

- 2104 Emergency Increase in Unemployment Compensation Benefits
- 3708 Improving Care Planning for Medicare Home Health Services
- 3715 Providing Home and Community-Based Services in Acute Care Hospitals
- 3717 Clarification Regarding Coverage of COVID-19 Testing Products
- 3720 Delaying Requirements for Enhanced FMAP to Enable State Legislation

DISASTER STATE PLAN AMENDMENT (SPA) – APPROVED BY CMS APRIL 9, 2020 – EFFECTIVE DATE OF MARCH 1, 2020

The following amendments were approved by CMS for during the national emergency period:

Regulatory

- Modification of the requirement to submit the SPA by March 31, 2020, to obtain an effective date during the first calendar quarter of 2020, pursuant to 42 CFR 430.20.
- Waiver of public notice requirements that would otherwise be apply to this SPA submission.
- ND Medicaid State plan allows for expedited consultation in certain circumstances. North Dakota will be issuing written consultation within two weeks of submitting the SPA.
- Modification of provider qualifications which may include suspending competency and state criteria.
- Waive the 12-month requirement for a continued stay review for a resident of an ICF/IID.

DISASTER SPA - APPROVED BY CMS APRIL 9, 2020 – EFFECTIVE DATE OF MARCH 1, 2020

The following amendments were approved by CMS for during the national emergency period:

Services

- Modification to the 34-day supply limit for medications, ND Medicaid may allow a one-time 90-day fill to decrease the need for office visits for ND Medicaid members.
- Expansion of prior authorization for medications by automatic renewal without clinical review, or time/quantity extensions.
- Make exceptions to the published Preferred Drug List if drug shortages occur. This would include options for covering a brand name drug product that is a multi-source drug if a generic drug option is not available.
- Waive the 15-day limit for payment for bed hold for an inpatient hospitalization for a resident of a nursing facility or intermediate care facility for individuals with an intellectual disability if the hospital stay is due to a diagnosis of COVID-19.

DISASTER SPA - APPROVED BY CMS APRIL 9, 2020 – EFFECTIVE DATE OF MARCH 1, 2020

The following amendments were approved by CMS for during the national emergency period:

Timelines

- Waive the requirement that the nursing facility established rate cannot exceed the limit rate for allowable unforeseeable expenses.
- Waive the timelines for nursing facility rate reconsiderations and appeals.

For Members

- Suspend premiums for individuals eligible under the Workers with Disabilities or Children with Disabilities groups.

QUALIFIED SERVICE PROVIDER (QSP) TEMPORARY ENROLLMENT CHANGES

Streamlined enrollment process for QSPs during the national emergency:

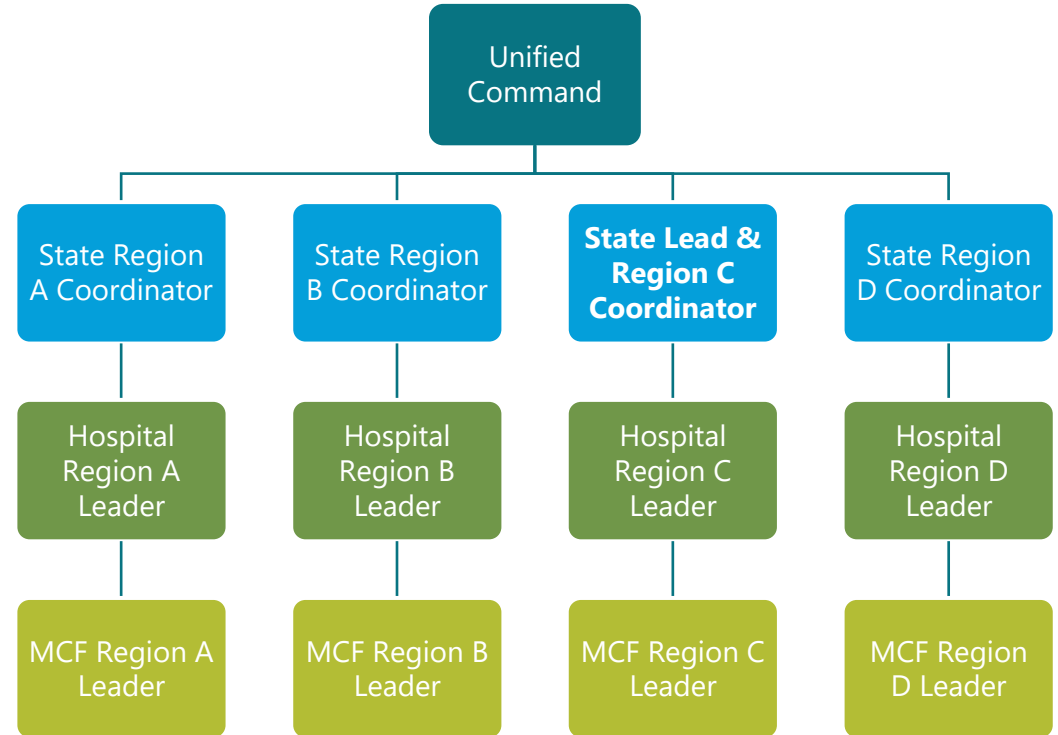
- Some requirements have been removed for enrollment during the COVID-19 national emergency. Any information that is not required at this time, will be required within 6 months of the end of the national emergency.
- QSPs enrolling to provide the following services are eligible to use the temporary enrollment process:
 - Chore
 - Companionship
 - Family Home Care
 - Family Personal Care
 - Homemaker
 - Non-Medical Transportation
 - Personal Care
 - Respite Care
 - Supervision
- Guidance and forms:
 - <http://www.nd.gov/dhs/info/covid-19/program-policy.html>

EXECUTIVE ORDERS

- QSP application process
- Children with Disabilities (CWD) and Workers with Disabilities (WWD) premiums
- DME prior authorizations

VULNERABLE PATIENT POPULATION PLAN (VP3)

- Merging of hospital, nursing homes surge plans as well as adding congregate living facilities
- Sorts the state into 4 regions
- Tiers 1, 2A, 2B, and 3 as in past plans
- Leadership structure
- Medicaid will develop billing instructions



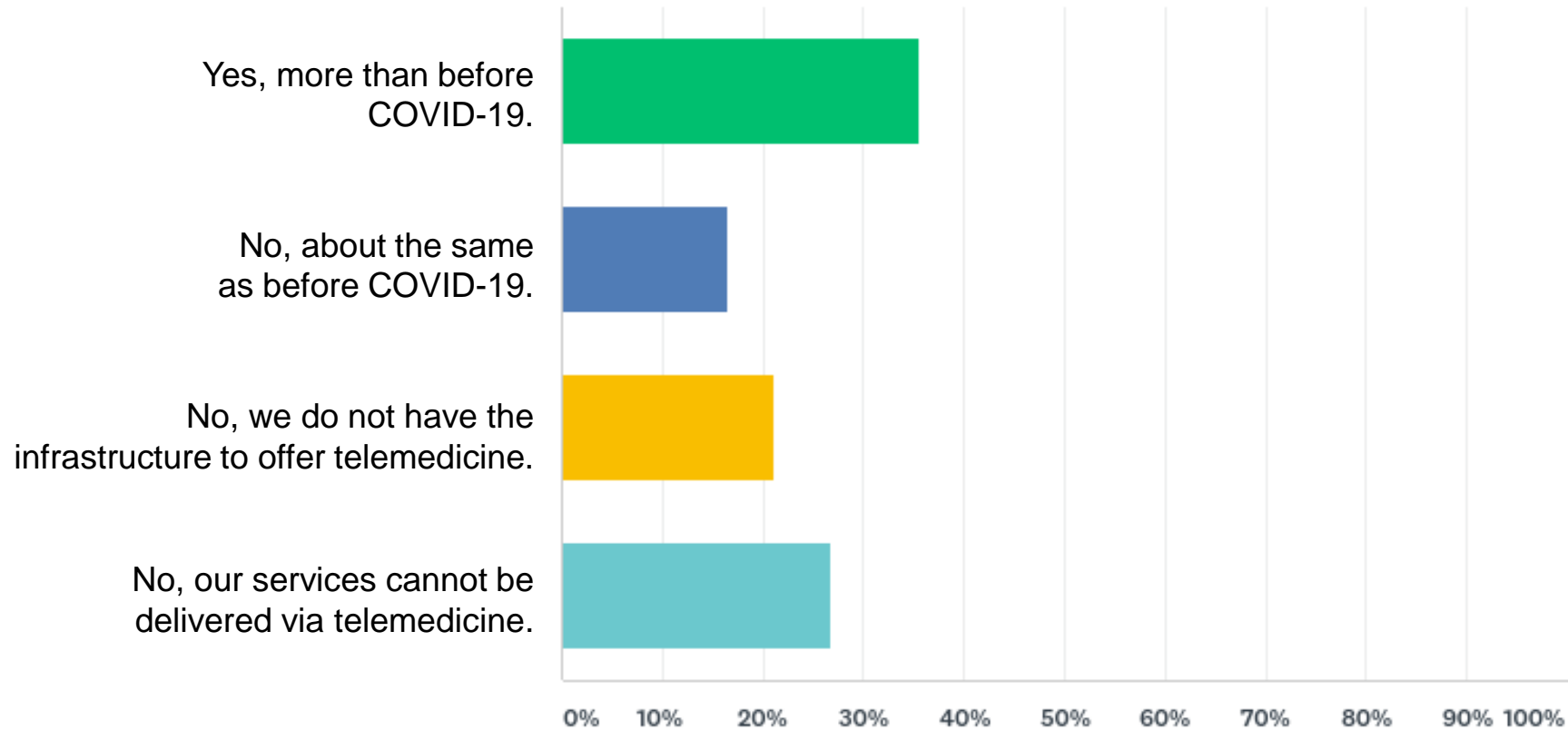
NORTH DAKOTA MEDICAID COVID-19 PROVIDER SURVEY RESULTS

WHAT TYPE OF SERVICES/EQUIPMENT/SUPPLIES DOES YOUR ORGANIZATION PROVIDE? CHECK ALL THAT APPLY.

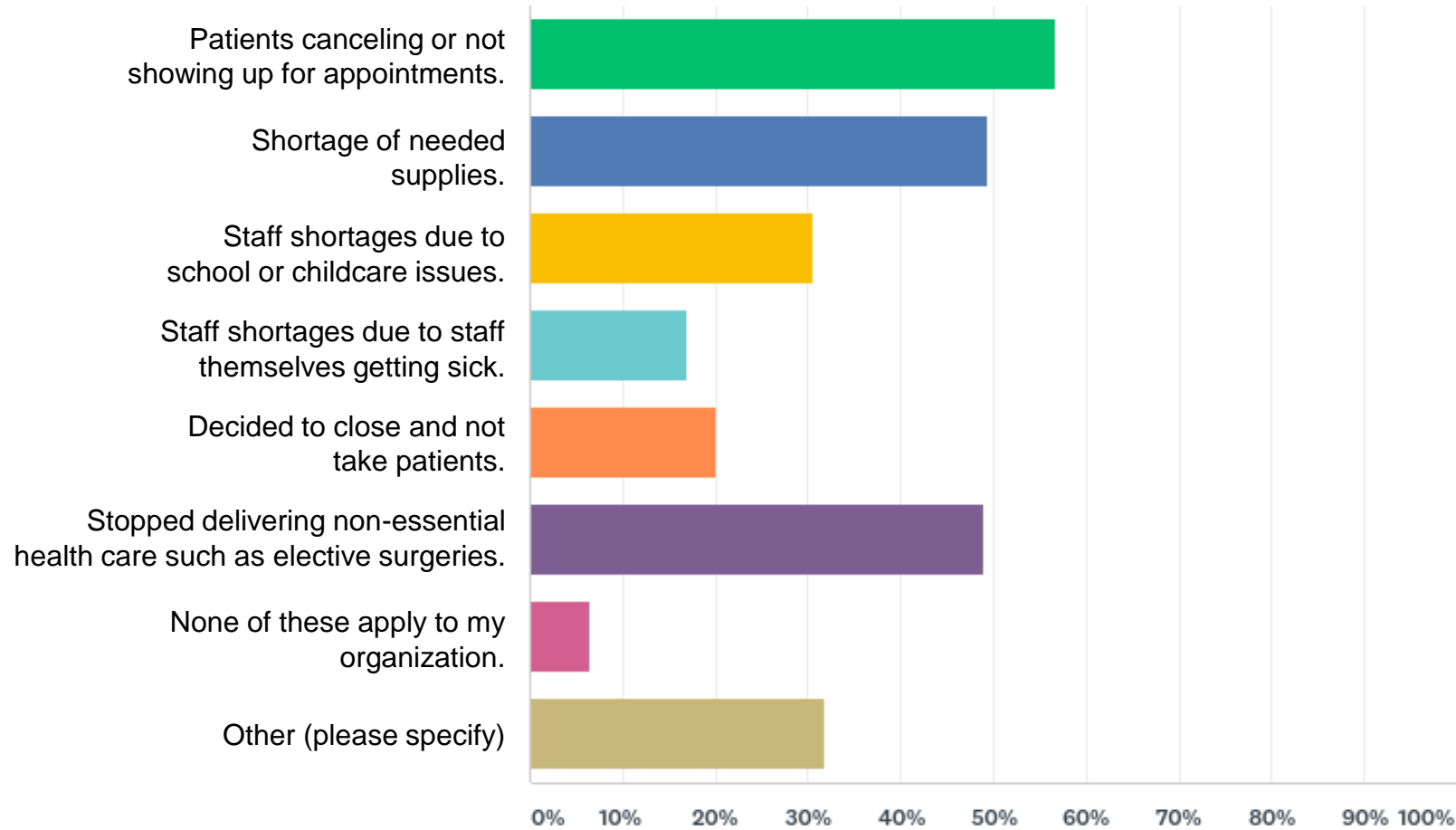
	Number of respondents
Ambulance	21
Ambulatory surgical center	12
Chiropractic	12
Critical access hospital	42
Dental	71
Developmental disabilities services	18
Durable medical equipment, prosthetics, orthotics and/or supplies	20
Federally qualified health center (FQHC)	9
Home and community-based services provider	52
Home health, private duty nursing and/or hospice	19
Human service center (HSC)	6
Indian health service (IHS) or 638 clinic	8
Non-emergency transportation	15
Nursing home or basic care facility	33
Optometric	49
Pharmacy	14
Physical, occupational or speech therapy	35
PPS Hospital	10
Primary care, family medicine or pediatrics that is not delivered at a FQHC, RHC, PHC, HSC or IHS/638	11
Public health clinic (PHC)	23
Rural health clinic (RHC)	28
Specialty care	24

Total number of respondents = 265

Has your organization increased services offered via telemedicine in response to the ND Medicaid temporary telemedicine policy?



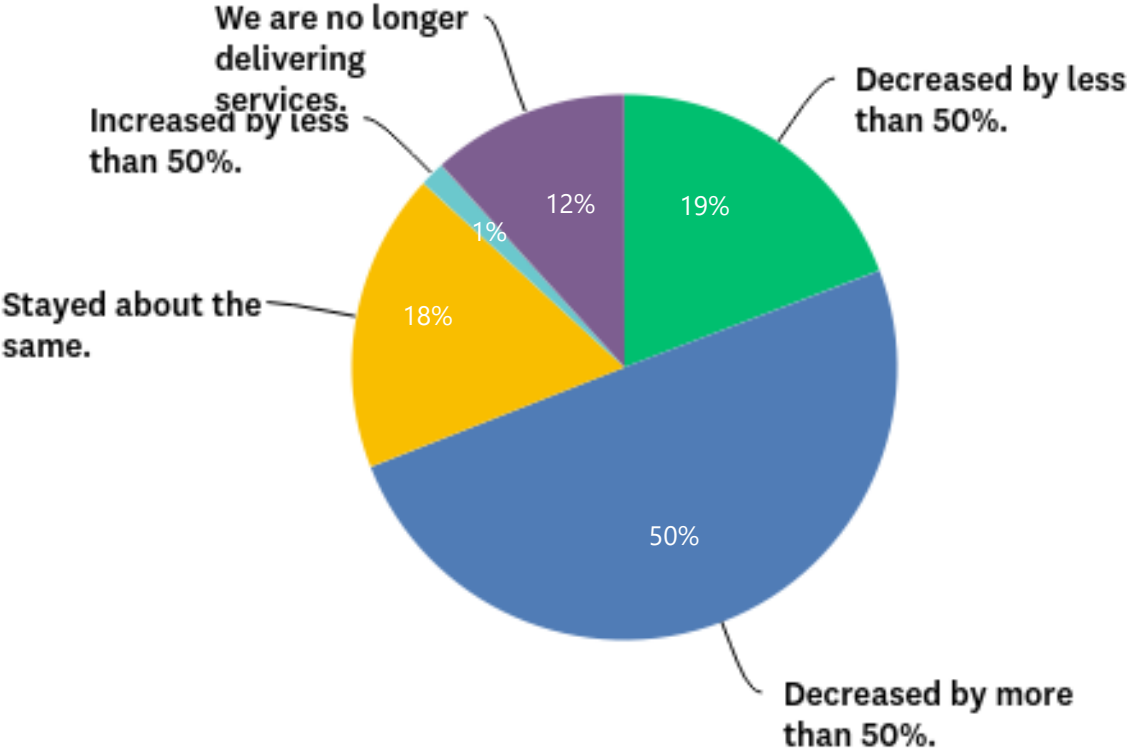
What effects has your organization experienced due to COVID-19? Check all that apply.



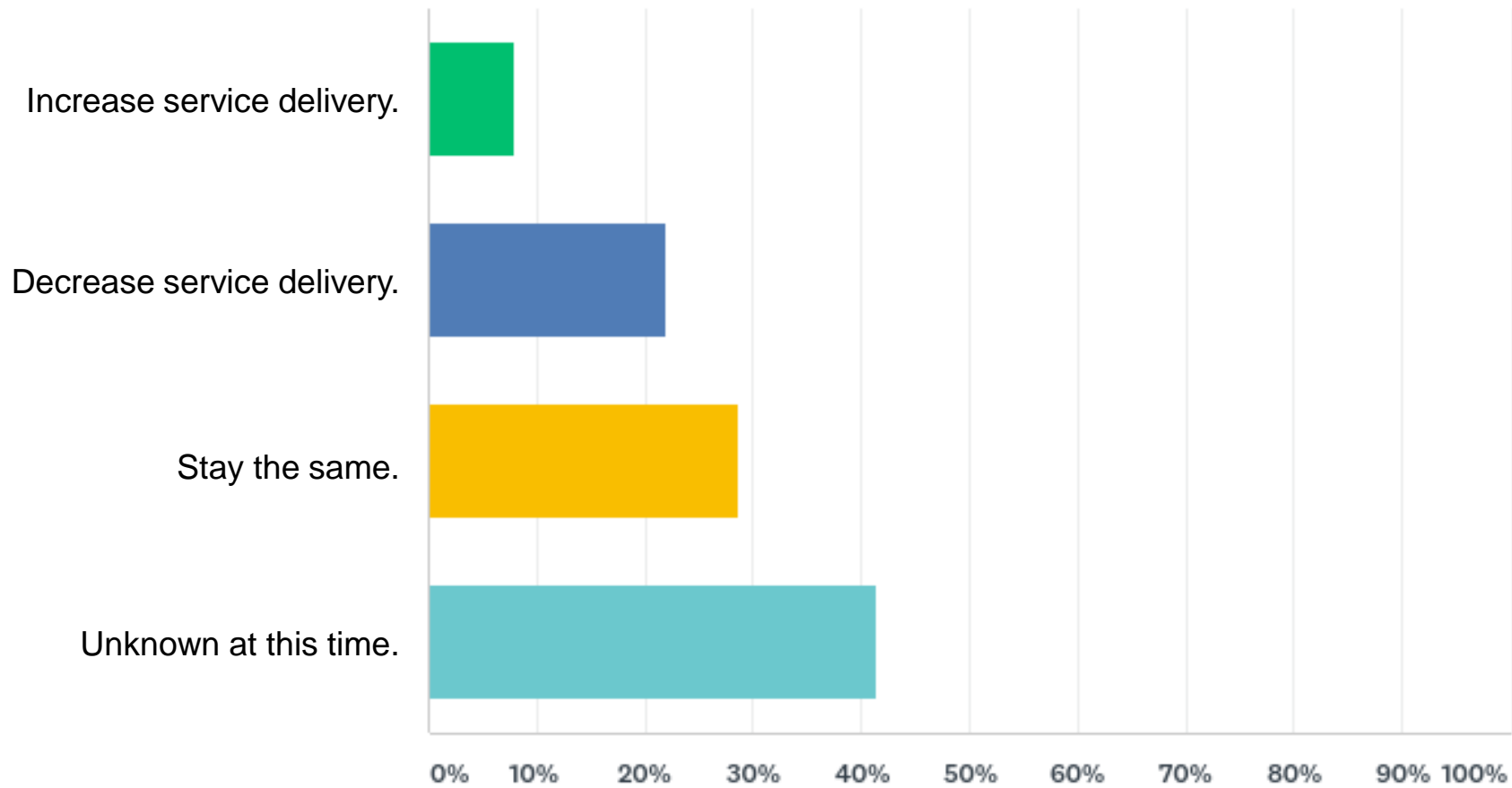
WHAT EFFECTS HAS YOUR ORGANIZATION EXPERIENCED DUE TO COVID-19? – RESPONDENTS WHO INDICATED ‘OTHER (PLEASE SPECIFY)’

Response	Number of respondents with this issue
Providing emergency services only	25
Had to cancel non-emergency/elective services	16
Staff shortages – quarantine/PTO/childcare/fear	16
Telemedicine concerns	11
Cancellations	8
Visitor restrictions	7
Inability to order PPE supplies (exam gloves, etc)	4
Teleservices/changes in services	3
Changing delivery of immunizations	3
No real changes	3
Providing room for teleservice for patients who do not have internet	2
Inability to access nursing home/assisted living centers	2
Contracted staff – furloughed	1
Technology costs – for service to patients	1
Technology costs – working from home	1
No new referrals	1
Training issues	1
Sites closing	1
Required pre-screening for home health services	1
Appointment only	1

Thinking about how your overall service delivery has changed in response to COVID-19, your delivery has (CHOOSE ONE based on your best estimate):



In the next 3-4 weeks in response to COVID-19, do you think your organization will:



WHAT OTHER CHALLENGES RELATED TO COVID-19 DOES YOUR ORGANIZATION FACE THAT WERE NOT ALREADY ADDRESSED IN THIS SURVEY?

Other Challenges	Number of respondents with this issue
Financial issues – cash flow, expense, payroll	29
PPE and client supply issues	19
None	14
Unemployment/furlough staff issues	11
Staff shortage – childcare, rural area, illness	10
Telehealth issues with technology	8
Reimbursement issues - uncertainty	8
Staff fears in regard to COVID-19 – hazard pay	7
Future expectations about criteria when reopening for routine services	7
COVID – 19 testing for employees	5
Resident/client mental health issues	5
Obtaining signatures on paperwork	4
Obtaining signatures on paperwork	4
Fewer admissions / appointments	4
Access to patients – no phones	2
Inability to send paper claims to Medicaid after 04/15	2
Continuity of services	1
Operation changes to encourage elderly to stay home	1
Landlord changed building access hours	1
Possible executive orders implemented by governor	1
Inability to classify non-essential healthcare workers	1
Drug shortages	1
New patients coming to rural areas	1
Office closure	1
Not adequate areas for separation of respiratory/non respiratory patients	1
Driver/passenger concerns	1

SIGN UP FOR EMAILS FROM NORTH DAKOTA MEDICAID

- We now have a provider/stakeholder email list that people can sign up for at: <http://www.nd.gov/dhs/services/medicalserv/medicaid/provider.html> (very top of the page).
- Anyone can subscribe/unsubscribe from this list.
- We will send out updates, newsletters, etc.

COVID-19 RELATED GUIDANCE AND POLICIES

- **Changes to member eligibility during the national emergency are outlined here:**
<http://www.nd.gov/dhs/info/covid-19/docs/covid-19-faq-temporary-fmap.pdf>
- **Changes to provider enrollment, for providers who are enrolling to provide COVID-19 related services during the national emergency, are outlined here:**
<http://www.nd.gov/dhs/info/covid-19/docs/covid-19-faq-temporary-provider-enrollment-process.pdf>.
- **Temporary DME Policy:** <http://www.nd.gov/dhs/info/covid-19/docs/covid-19-faq-temporary-dme-policy.pdf>
- **FAQs for Nursing Facilities:** <http://www.nd.gov/dhs/info/covid-19/docs/covid-19-faq-nursing-facilities.pdf>
- **FAQs for Pharmacy:** <http://www.nd.gov/dhs/info/covid-19/docs/covid-19-faq-medicaid-pharmacy.pdf>
- **Temporary Telemedicine Policy:** <http://www.nd.gov/dhs/info/covid-19/docs/policy-medicaid-temporary-telehealth.pdf>
- Additional provider Q&A documents can be found at <http://www.nd.gov/dhs/info/covid-19/provider-q-a.html>

COVID-19 RESOURCES AVAILABLE ONLINE

DHS landing page for COVID-19 resources: <http://www.nd.gov/dhs/info/covid-19/index.html>

- Contains information on program/policy changes, provider Q&A, resources for individuals and families and much more
- COVID-19 health information is available on the Department of Health's website at <https://www.health.nd.gov/diseases-conditions/coronavirus>

QUESTIONS?