

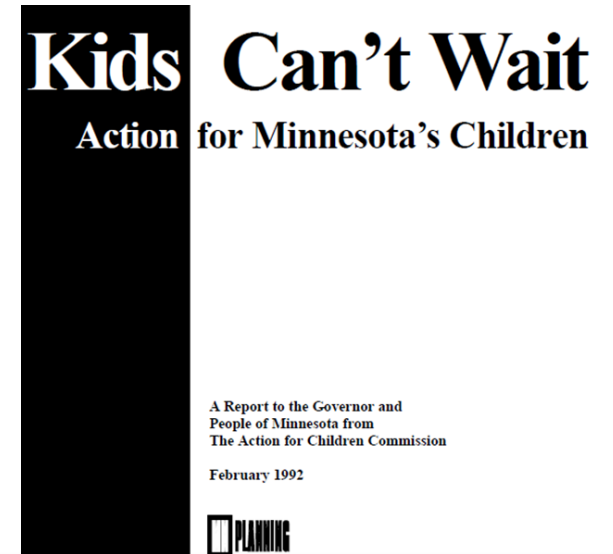


# Minnesota Children's Fiscal Map

Stephanie Hogenson, Children's Cabinet Policy Director

# Minnesota's Children's Cabinet

- **Align people, data, money and policy around children**
- Children's Cabinet = Shared Governance
  - Commissioners , Gov/Lt. Gov Co-chairs
  - Senior Leadership
  - Advisory Councils
- Guiding Principles
  - Equity for Minnesota's children
  - Leadership engagement
  - State has a responsibility and cross-agency coordination is necessary
  - Use data to improve outcomes
  - Strong partnerships make a positive impact



# Governance

## Children's Cabinet

Commissioners

Co-Chairs:  
Governor, Lt.  
Governor

## Senior Leadership

Deputy/Asst.  
Commissioners

Senior Agency  
Leaders

## Cross-Agency Structures

- Interagency Leadership Team
- Healthy Beginnings
- Child Care and Early Learning
- Mental Health
- Out of School Time
- Food Security
- Youth Justice
- Housing

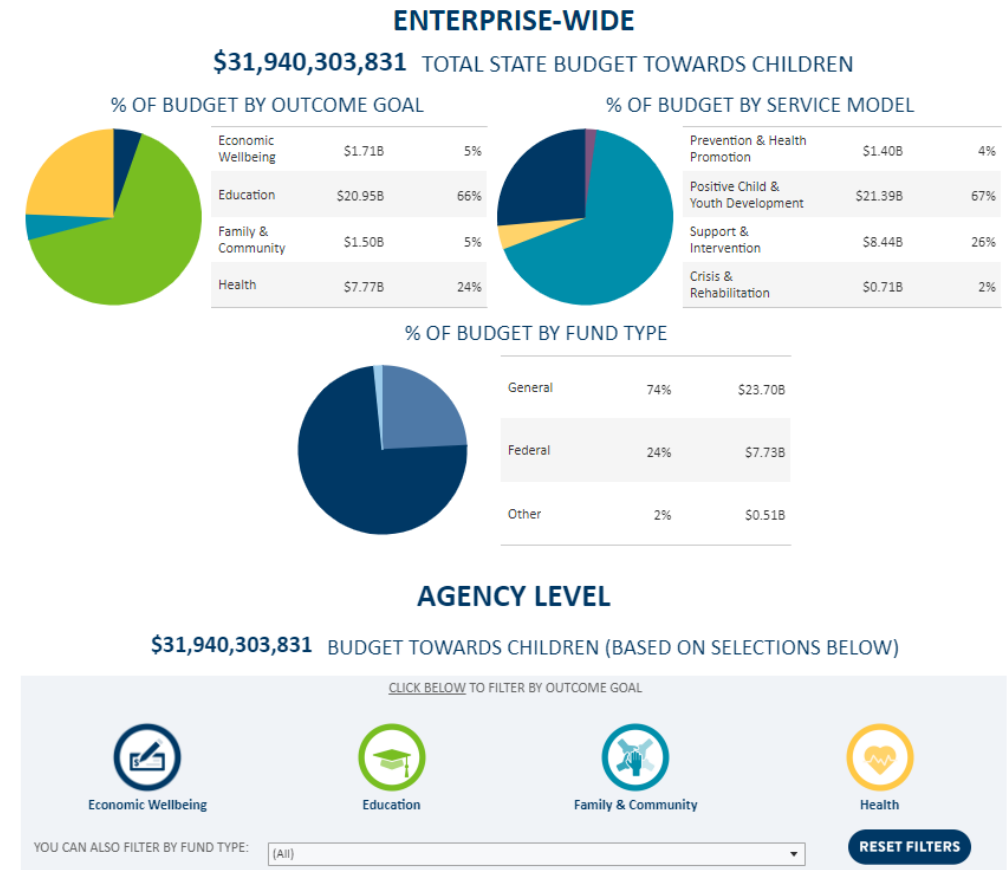
## External Advisory Body

- Children's Cabinet Advisory
- State Advisory on Early Childhood Education & Care

# Children's Fiscal Mapping

## Better understanding state spending on children, youth and families

1. Public display of investments and allocations in children
2. Generate platforms and data to identify cross-agency opportunities to maximize federal, state and local funding streams
3. Use the data to inform spending decisions and budget recommendations



[Children's Fiscal Map / Minnesota Management and Budget \(MMB\) \(mn.gov\)](#)

# Fiscal Mapping Using Shared Parameters

*Children's fiscal mapping is a process of using shared parameters and definitions to tag and track resources in the state budget that are allocated to programs, services, and interventions for children.*

<b>OUTCOME GOALS AREAS</b>	<b>SERVICE MODELS</b>
<ul style="list-style-type: none"><li>• Economic Wellbeing</li><li>• Health</li><li>• Educated</li><li>• Family &amp; Community</li></ul> <p><i>Defined in <a href="#">Fiscal Map Glossary</a></i></p>	<ul style="list-style-type: none"><li>• Prevention and Health Promotion</li><li>• Positive Youth and Child Development</li><li>• Support and Intervention</li><li>• Crisis and Rehabilitation</li></ul>

# Fiscal Map Scope

- The goal of this fiscal map is to provide information on state expenditures on programs serving children and youth age 18 and under
  - For programs with broader ages served, expenditures are estimated for only expenditures on children or households with children age 18 and under
  - For programs that define children by age over 18 (e.g. Medical Assistance defines children as under age 21) the map is inclusive of the program's age range definition
- Excludes programs that serve the total population or broad segment of the population, including those that have secondary benefits for children and youth
- 415 programs across 15 cabinet level agencies as well as the Minnesota State Academies and Public Educators Licensing and Standards Board (PELSB)
- The total state budget expended on children according to this exercise is \$31.94B for 2020-21 biennium, which is 35.6% of the comparable state budget
- Funding streams included are State General Fund, Federal funds that flow through the state, and some other state funding streams such as the Health Care Access Fund

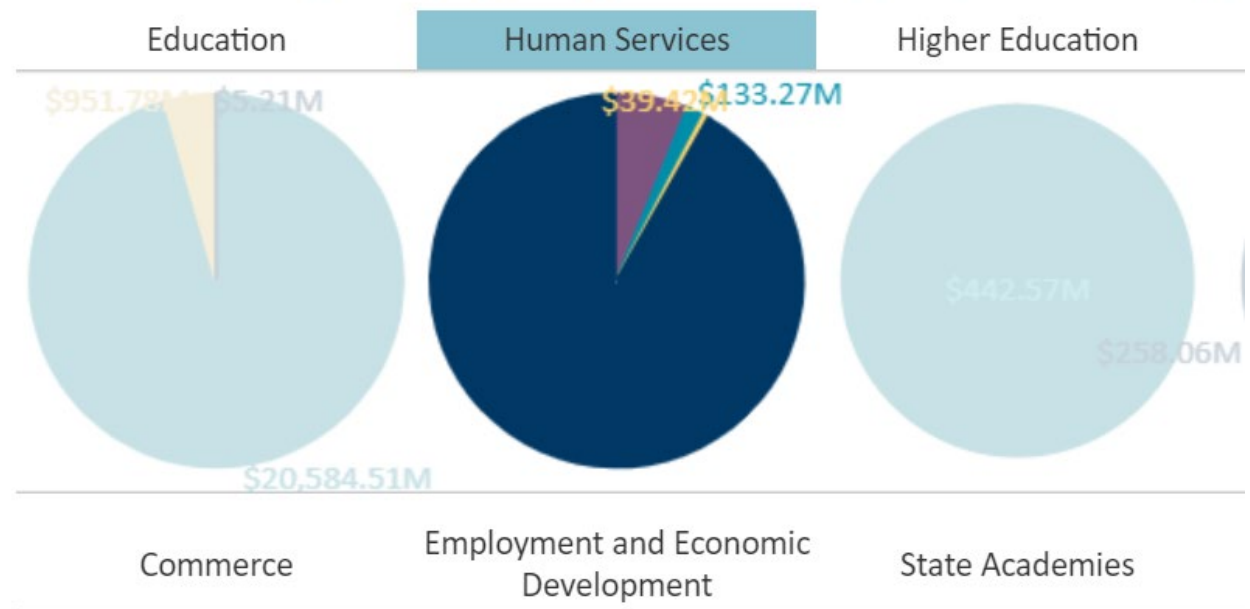
# What's not included in the fiscal map

- The current version of the children's fiscal map **does NOT include:**
  - COVID-19 related federal or state stimulus expenditures
  - Expenditures from fiscal years other than 2020-21
  - MDH data in the map are not comprehensive at this time and only include expenditures from the Child and Family Health Division and several other MDH program expenditures that clearly fall into the scope of the exercise. Additional MDH data will be added when its finalized.

# Considerations for Human Services Funding Streams

- Track expenditures or appropriations
- Medicaid
  - Actual expenditures by population or percentage estimate
  - Breakdown by type of service offered
- Determine whether to include administrative funding
- Breakdown for federal funding streams (TANF, CCDF, CAPTA, etc)
  - Many budget systems have high-level expenditures

Children's Budgets by Agency | Outcome Goal(s): All | Service Model(s):





# Roadmap to updating the fiscal map

- Update data biennially, typically at beginning of each calendar year, with data from the new biennial budget
  - This would include adding any new program expenditures recently enacted that are within scope
  - Previous years' data will continue to be included to provide comparison over time.
- Additional data from MDH will be added
- More easily accessible program descriptions and links to more program information will be continually updated

# State Children & Youth Fiscal Map Cohort Participation

- Children's Funding Project is leading a cohort of states to build an open-sourced standardized state children and youth fiscal maps across the country for the purposes of comparison
- Minnesota was selected as one of four states with fiscal map experience that will participate in the cohort and help inform the principles of the standardized fiscal map
- Standardized maps will be developed over the next 12-20 months

# Proposed Fiscal Map Early Childhood Analysis

**Goal:** Better understand existing funding streams and determine opportunities to align or change existing funding models around a larger strategy for ensuring accessible high-quality early care and education for all families.

- Additional analysis could include:
  - additional expenditure breakdown
  - further spending by age (single age or prenatal-3 and 4 and 5 y/o) and race/ethnicity where able prioritizing ECE specific funding streams
  - identify expenditures that are one-time or ending for sustainability planning needs
  - add expenditures not currently included in the fiscal map (e.g. COVID relief funds and new funding from 2021 legislative session, possibly 2022 session)

The outputs of the analysis may include a refined spreadsheet of fiscal map data, additional visualizations on existing fiscal map, and a brief summarizing the findings.

# Further refining early childhood expenditure "labels"

- Expenditure labeling by program or service area for further understanding of expenditure purpose. *Proposed* additional labels include:
  - ECE Workforce Support
  - ECE Family Affordability
  - ECE Capacity Building
  - ECE Quality Supports
  - ECE business/program support
  - Basic need support (health, economic stability, food, etc)
    - These programs will be analyzed for the spend on young children age under 5.
  - Wrap around/community support



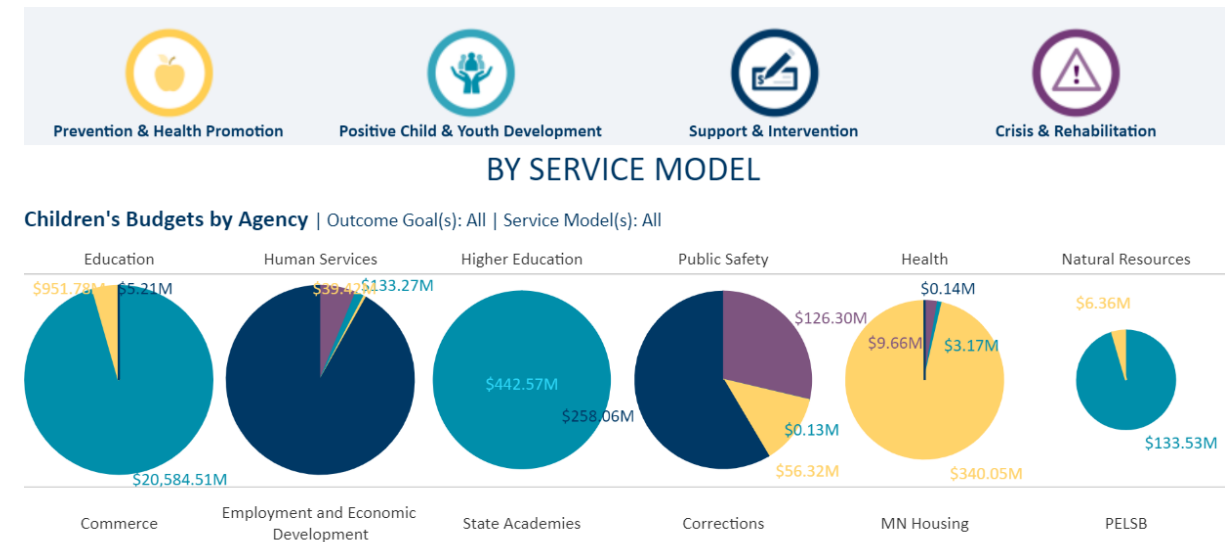
These would be in addition to current labels described in the [Current Fiscal Map Glossary](#)

# Fiscal Map Report & Visuals

- **Interactive data filtered by:**

- Agency
- Service Model
- Outcome Goals
- Individual program

- **Working on early childhood spending analysis using fiscal map**



[Children's Fiscal Map / Minnesota Management and Budget \(MMB\) \(mn.gov\)](https://mn.gov/childrenscabinet)

# Children's Fiscal Map Demonstration



**THANK YOU!**

Stephanie Hogenson  
[stephanie.hogenson@state.mn.us](mailto:stephanie.hogenson@state.mn.us)